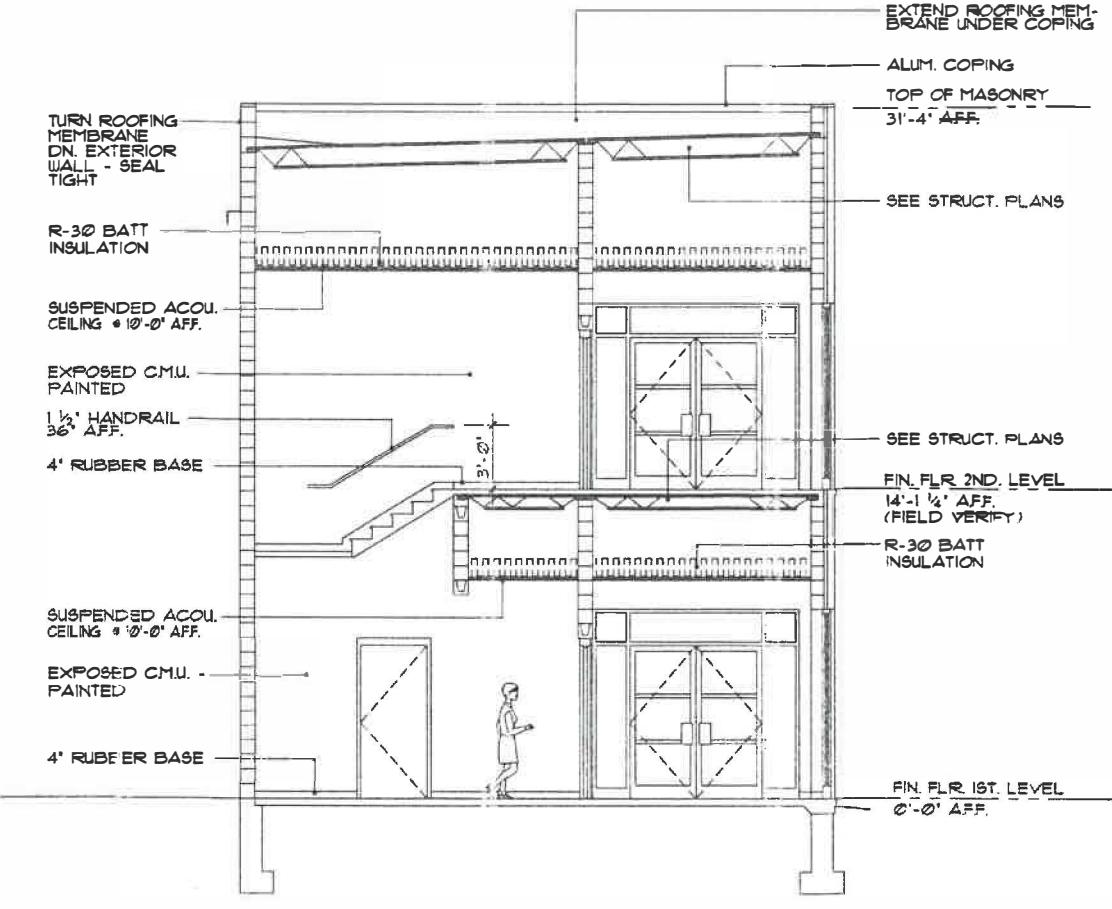


- EXISTING BRICK VENEER TO REMAIN - TUCKPOINT AS REQUIRED
- FIXED ALUM. FRAMING (BLACK) WITH INSULATED GLASS
- FF. (2 ND. LEVEL) 14' - 1 1/4" (FIELD VERIFY)
- EXTERIOR INSULATION FINISH SYSTEM
- 1" INSULATED GLASS TINTED, TEMPERED TYPICAL
- ALUMINUM FRAME SYSTEM (BLACK)
- (2') PRECAST CONC. BASE WITH 1" BEVEL
- FF. (1ST LEVEL) 0'-0"
- 1" INSULATED GLASS TINTED, TEMPERED TYPICAL

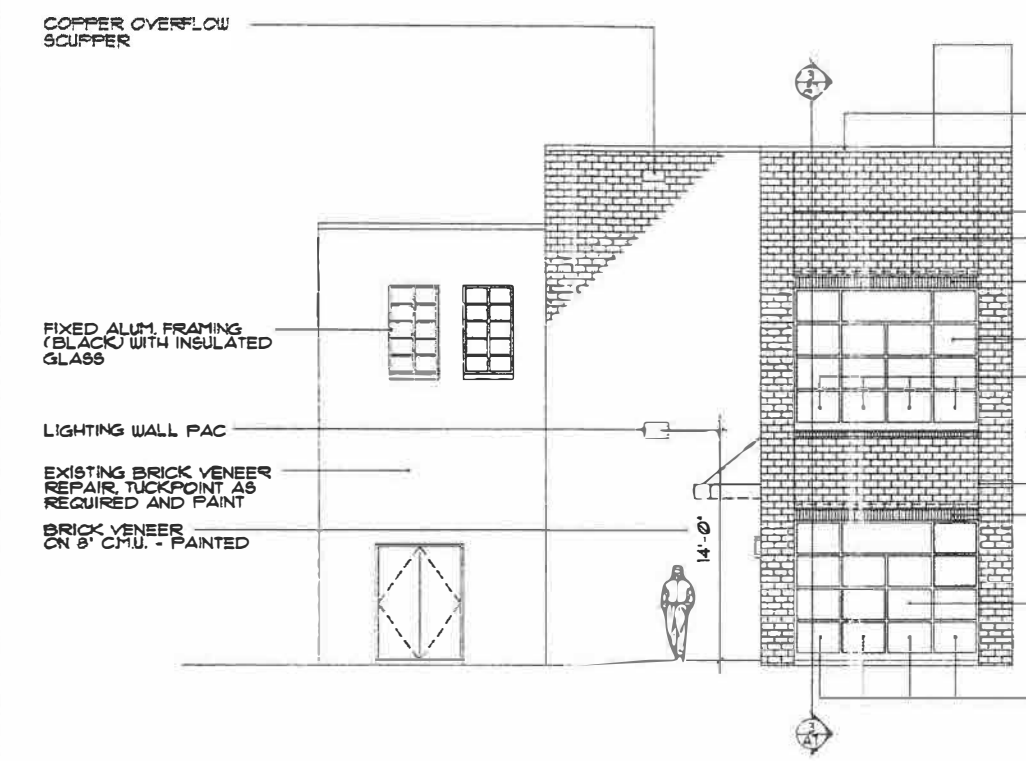
4 SOUTH EXTERIOR ELEVATION
3/16" = 1'-0"



- TURN ROOFING MEMBRANE DN. EXTERIOR WALL - SEAL TIGHT
- R-30 BATT INSULATION
- SUSPENDED ACQU. CEILING 10'-0" AFF.
- EXPOSED CMU. PAINTED
- 1 1/2" HANDRAIL 36" AFF.
- 4" RUBBER BASE
- SUSPENDED ACQU. CEILING 8'-0" AFF.
- EXPOSED CMU. - PAINTED
- 4" RUBBER BASE

- EXTEND ROOFING MEMBRANE UNDER COPING
- ALUM. COPING TOP OF MASONRY 31'-4" AFF.
- SEE STRUCT. PLANS
- SEE STRUCT. PLANS
- FIN. FLR 2ND. LEVEL 14'-1 1/2" AFF. (FIELD VERIFY)
- R-30 BATT INSULATION
- FIN. FLR 1ST. LEVEL 0'-0" AFF.

3 BUILDING SECTION
1/4" = 1'-0"



- ALUMINUM COPING TOP OF MASONRY 31'-4"
- CONTROL JOINT FLASHING AT ALL OPENINGS
- BRICK SOLDIER COURSE
- 1" INSULATED GLASS TINTED TYPICAL
- 1" INSULATED GLASS TINTED TEMPERED, TYPICAL
- FF. (2 ND. LEVEL) 14' - 1 1/4" (FIELD VERIFY)
- CONTROL JOINT
- BRICK SOLDIER COURSE
- 1" INSULATED GLASS TINTED TYPICAL
- FF. (1ST LEVEL) 0'-0"
- 1" INSULATED GLASS TINTED TEMPERED, TYPICAL

2 WEST EXTERIOR ELEVATION
3/16" = 1'-0"



- ALUMINUM COPING
- COPPER WATER HEAD
- FLASHING AT ALL OPENINGS
- BRICK VENEER ON 12" CMU.
- SUSPENDED CANOPY - ADD ALTERNATE #3
- 12" X 8" 250 ALUMINUM PREFINISHED DOWNSPOUT TIE TO EXIST. STORM SEWER

- TOP OF MASONRY 31'-4"
- CONTROL JOINT
- BRICK SOLDIER COURSE
- EXISTING BRICK VENEER TO REMAIN
- FIXED ALUM. FRAMING (BLACK) WITH INSULATED GLASS
- FF. (2 ND. LEVEL) 14' - 1 1/4" (FIELD VERIFY)
- JUDICIAL CLERK ANNEX
- STUD MOUNTED, NON-ILLUMINATED SIGNAGE
- EXISTING BRICK VENEER TO REMAIN - TUCK POINT AS REQUIRED - PAINT
- FF. (1ST LEVEL) 0'-0"
- ALUMINUM/GLASS ENTRY SYSTEM

1 NORTH EXTERIOR ELEVATION
3/16" = 1'-0"

SMITH AND BUTTERFIELD
 111 EAST THIRD STREET
 OWENSBORO, KY 40201
 MICHAEL WELLS ARCHITECT
 210-916-0508 FAX: 210-916-0508
 POST OFFICE BOX 492

DATE: 2 MAY 2005
REVISIONS
PROJ. NO.
SHEET A7 OF 3478.

